

642

SPECIFICATIONS

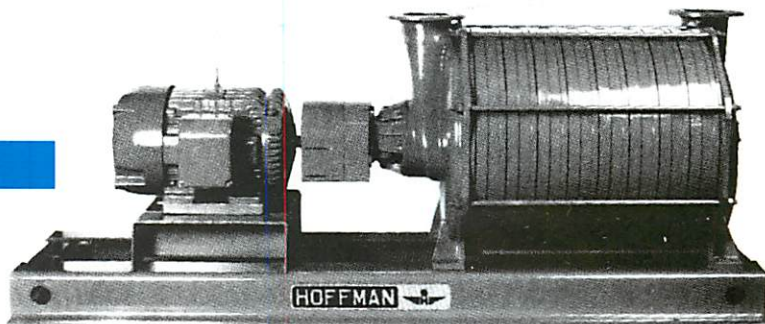
TECHNICAL DATA

- Number of stages:** 1 through 10 (11 for 50 Hz).
Inlet connection: 6" (152mm) flange, ANSI 125# drilling.
Outlet connection: 6" (152mm) flange, ANSI 125# drilling.
Operating speed: 3550 RPM.
Seals (air): Two carbon rings each end.
Seals (gas): Four carbon rings and inert gas injection taps inlet end, two carbon rings outlet end (grease lube only)
Bearings: Ball, 10 year minimum life per AFBMA L₁₀ standard.
Lubrication: Grease standard (oil system available).
First critical speed: 4,274 RPM (10 stage).
Direct drive: Standard; also available for gear or belt drive.
Vibration tolerance: 0.28"/sec velocity.
Shaft end: 1-5/8" (41mm) diameter, inlet or outlet drive available.
Rotor balance: Impellers are statically balanced individually. Complete rotating assemblies are dynamically balanced.
Maximum casing pressure: 25 PSIG.

DIMENSIONS

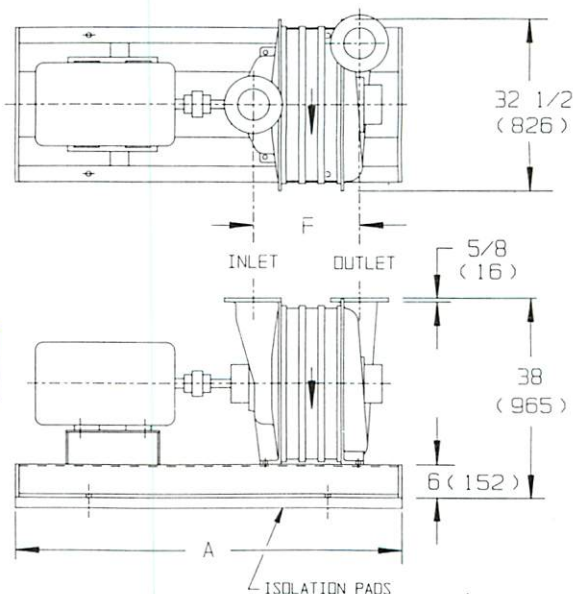
Model	A		F		Weight		Rotor WK ² (lb. ft. ²)
	Inches	(mm)	Inches	(mm)	LBS	KG	
64201	48"	(1219)	9-13/16"	(249)	825	375	8
64202	60"	(1524)	13-9/16"	(345)	1065	484	15
64203	60"	(1524)	17-5/16"	(440)	1305	593	23
64204	72"	(1829)	21-1/16"	(535)	1545	702	30
64205	72"	(1829)	24-13/16"	(630)	1785	811	38
64206	84"	(2134)	28-9/16"	(726)	2020	918	45
64207	84"	(2134)	32 5/16"	(821)	2260	1027	53
64208	96"	(2438)	36-1/16"	(916)	2500	1136	60
64209	96"	(2438)	39-13/16"	(1011)	2740	1245	68
64210	96"	(2438)	43-9/16"	(1107)	3010	1368	76

Information is approximate, subject to change, and not to be used for construction purposes.

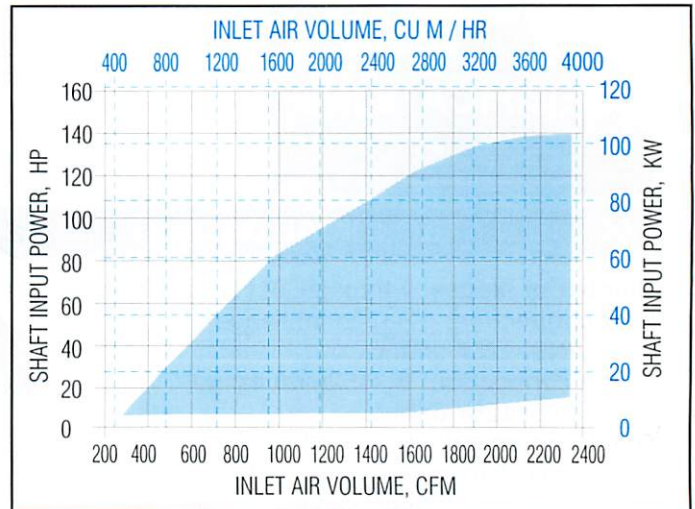
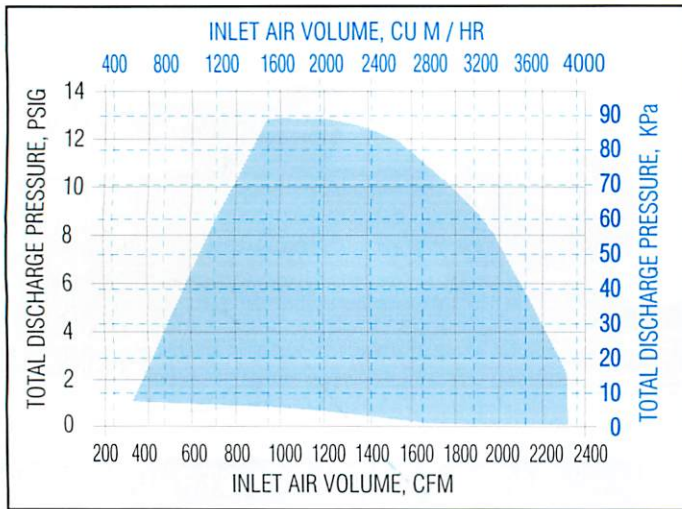


MATERIALS OF CONSTRUCTION

- Casing:** Heads, Sections and Bearing Housing: Cast Iron ASTM A48, Class 30.
Tie rods: Cold drawn steel.
Section sealing: RTV silicone.
Shaft: Carbon steel, AISI 1045 (stainless steel available).
Impellers: Cast aluminum. Heresite and other coatings for special applications.
Base: Formed steel.
Motor pedestal: Welded steel plate.
Finish: Blue enamel over zinc oxide primer.
Base pads: Cork strips.
Interstage baffles: AISI 300 Series Stainless Steel.

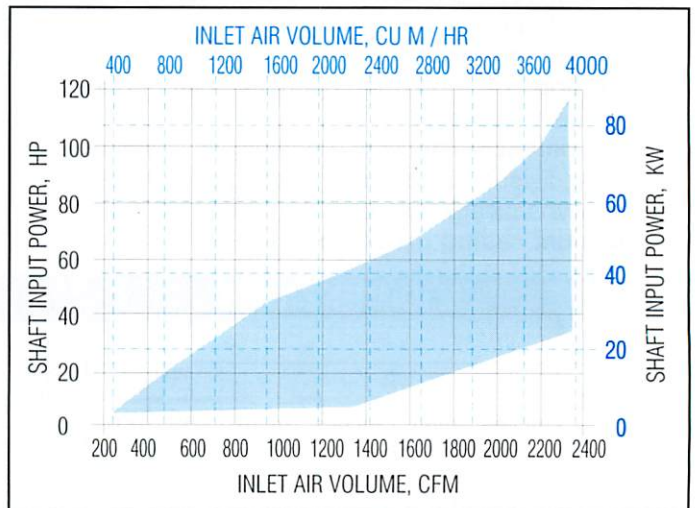
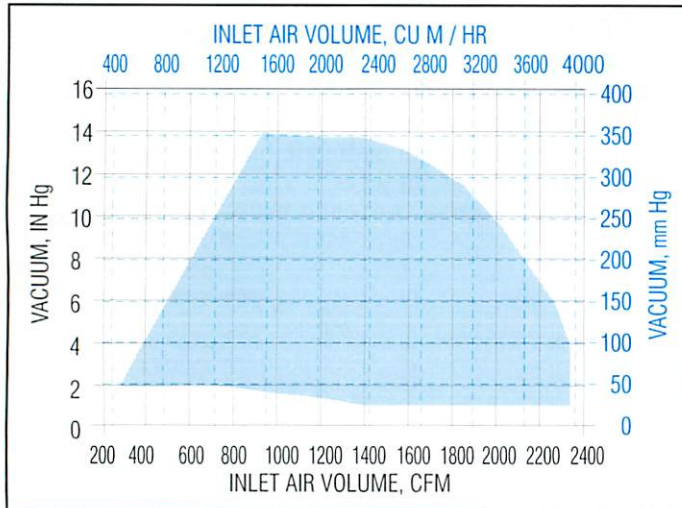


APPROXIMATE BLOWER PERFORMANCE



Inlet conditions: 14.7 PSIA (1.03 Kg/cm²), 68°F (20°C), 36% RH. Speed: 3550 RPM.

APPROXIMATE EXHAUSTER PERFORMANCE



Atmospheric conditions: 29.9" Hg (760 mm Hg), 68°F (20°C), 36% RH. Speed: 3550 RPM.



HOFFMAN AIR & FILTRATION SYSTEMS

6181 THOMPSON RD. • P.O. BOX 548 • E. SYRACUSE, NY 13057-0548
 PHONE: (315) 432-8600 • FAX: (315) 432-8682
 E-MAIL: hoffman.air@btrinc.com • WEB: <http://www.hoffmanair.com>

ISO 9001 REGISTERED



FM 30949

