

# 742

## SPECIFICATIONS

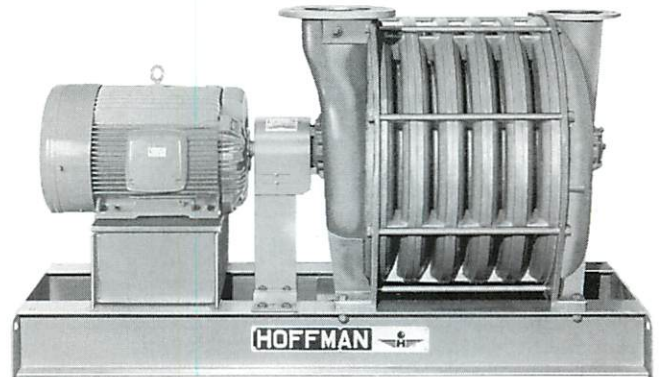
### TECHNICAL DATA

- Number of stages:** 1 through 11 (12 for 50 Hz).
- Inlet connection:** 10" (254mm) flange, ANSI 125# drilling.
- Outlet connection:** 8" (203mm) flange, ANSI 125# drilling.
- Operating Speed:** 3550 RPM.
- Seals (air):** Two carbon rings each end.
- Seals (gas):** Four carbon rings each end with inert gas injection taps.
- Bearings:** Ball, 10 year minimum life per AFBMA L<sub>10</sub> standards.
- Lubrication:** Grease standard (oil system available).
- Impeller diameter:** 24" (610mm).
- Impeller tip speed:** 372 FPS (113m/sec).
- First critical speed:** 4270 RPM (11 stage).
- Maximum Casing Pressure:** 25PSIG.
- Direct Drive:** Yes, also available for V-belt or gear drive.
- Vibration tolerance:** 0.28"/sec (7.1mm/sec).
- Shaft end:** 2-1/4" (57mm) diameter, inlet end drive standard.
- Rotor Balance:** Impellers are statically balanced individually. Complete rotating assemblies are dynamically balanced.

### DIMENSIONS

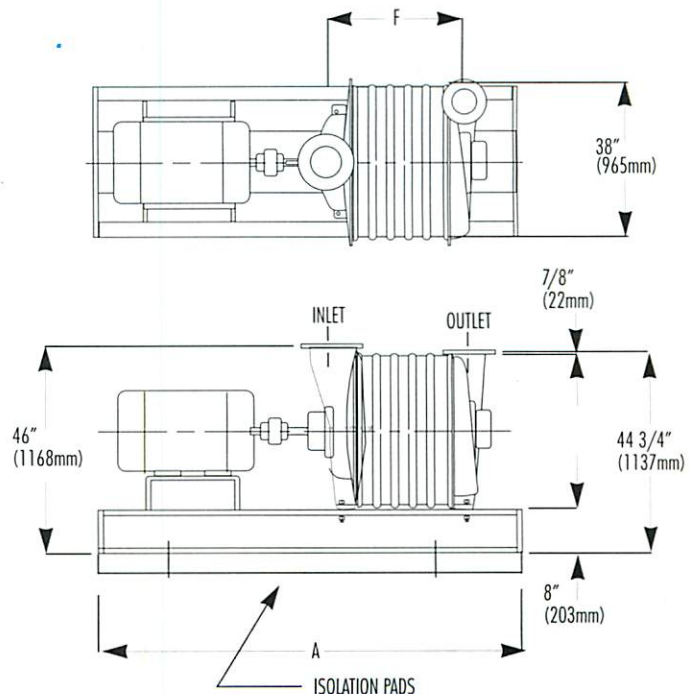
MODEL	A Inches (mm)	F Inches (mm)	WEIGHT		ROTOR WK <sup>2</sup> (lb. ft. <sup>2</sup> )
			LBS	KG	
74201	60" (1524)	13 1/4" (337)	1400	635	10
74202	72" (1829)	17 9/16" (446)	1800	816	21
74203	72" (1829)	21 7/8" (556)	2140	971	32
74204	72" (1829)	26 3/16" (665)	2530	1148	43
74205	84" (2134)	30 1/2" (775)	2990	1356	54
74206	84" (2134)	34 13/16" (884)	3350	1520	65
74207	96" (2439)	39 1/8" (994)	3710	1683	76
74208	96" (2439)	43 7/16" (1103)	4140	1878	88
74209	108" (2743)	47 3/4" (1213)	4550	2064	99
74210	108" (2743)	52 1/16" (1322)	5000	2268	109
74211	120" (3048)	56 3/8" (1432)	6060	2749	120

Information is approximate, subject to change, and not to be used for construction purposes.

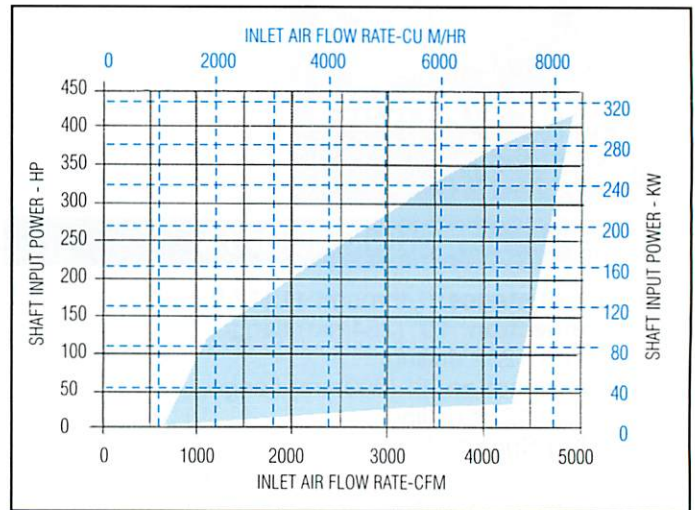
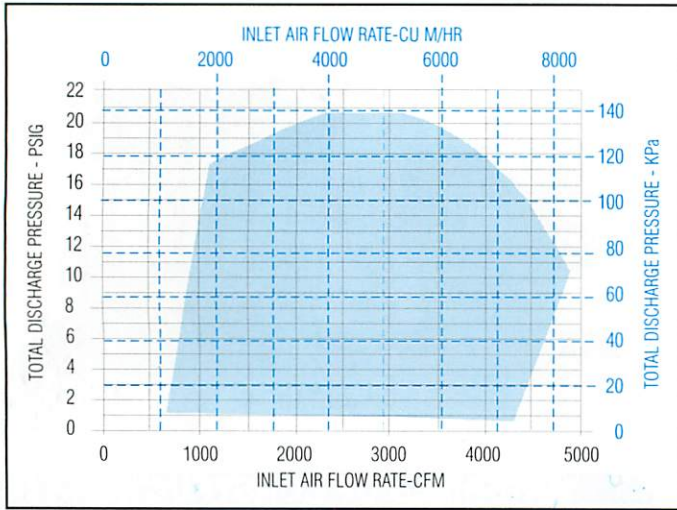


### MATERIALS OF CONSTRUCTION

- Casing:** Heads, sections and bearing housing: Cast Iron ASTM A48, Class 30.
- Tie rods:** 3/4" (19mm) diameter cold drawn steel.
- Section sealing:** RTV Silicone.
- Shaft:** Carbon steel, AISI 1045 (stainless steel available).
- Impellers:** Cast aluminum. Fabricated construction and special coatings available.
- Base:** Fabricated steel.
- Motor pedestal:** Welded steel plate.
- Finish:** Blue enamel over rust inhibitive primer.
- Base pads:** Cork strips.
- Interstage Baffles:** AISI 300 Series Stainless Steel.

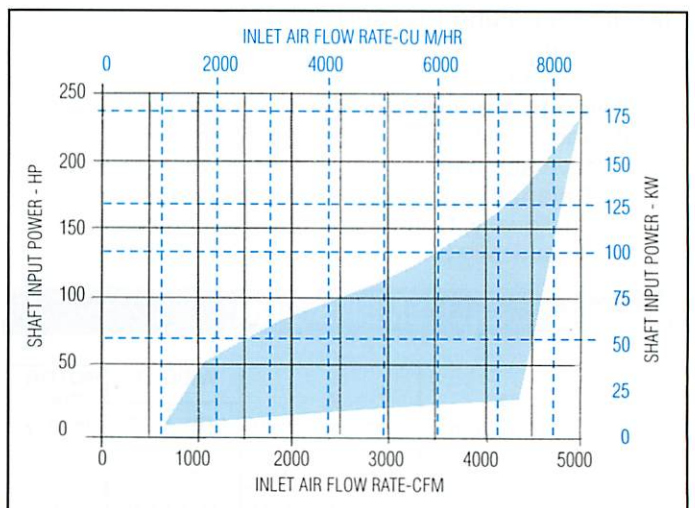
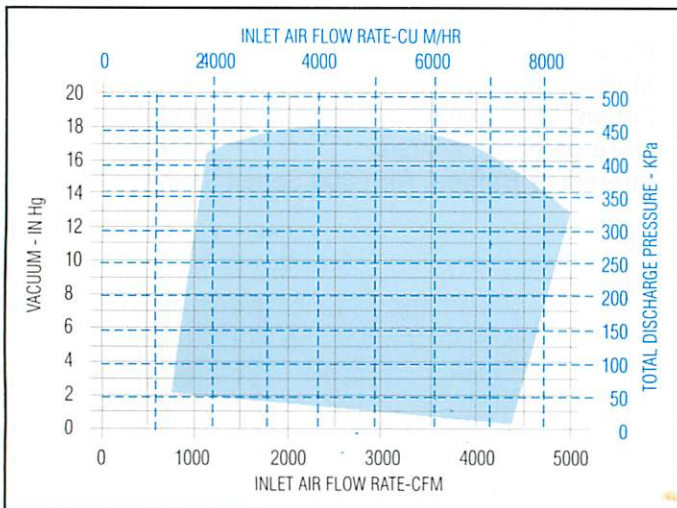


## APPROXIMATE BLOWER PERFORMANCE



Inlet conditions: 14.7 PSIA (101.4 KPa), 68°F (20°C), 36% RH. Speed: 3550 RPM.

## APPROXIMATE EXHAUSTER PERFORMANCE



Atmospheric conditions: 29.9" Hg (760 mm Hg), 68°F (20°C), 36% RH. Speed: 3550 RPM.



### HOFFMAN AIR & FILTRATION SYSTEMS

6181 THOMPSON RD. • P.O. BOX 548 • E. SYRACUSE, NY 13057-0548

PHONE: (315) 432-8600 • FAX: (315) 432-8682

E-MAIL: hoffman.air@btrinc.com • WEB: <http://www.hoffmanair.com>

ISO 9001  
REGISTERED



FM 30949

