

**TECHNICAL DATA
1260 SERIES**

DESIGN

Air or gas
Number of stages 4-8
Inlet or outlet driven Inlet standard
Inlet connection 12" flange, matches 125# ANSI
Outlet connection 12" flange, matches 125# ANSI
Operating speed 3,550 RPM (60 Hz)
Maximum casing pressure 25 PSIG (1.72 bar)
Seals (air) Labyrinth, carbon ring available
Seals (gas) Carbon ring type standard;
special seals available
Bearings Ball, life per AFBMA spe. #B-10
Lubrication Oil standard, grease optional
Impeller diameter 25.0 (635.0)
Impeller tip speed 23,235 FPM (7,082m/m)
Direct drive Standard shaft diameter
at coupling 2.25 (57.15)
Vibration tolerance 1.25 mils measured in vertical
plane at top of bearing housing (.032mm)

CAPACITIES

Blower 1,650-7,500 SCFM, 14.3 PSIG max
2,805-12,750 Sm³/H, .99 bar
Exhauster 1,400-8,000 ICFM, 14.8" Hg max
2,380-13,600 Im³/H, 375mm Hg

MATERIALS OF CONSTRUCTION

Casing Cast iron ASTM A48 grade 25/30*
Bearing housings Cast iron with bronze insert
Bearing caps & oil reservoirs Cast iron
Tie rods Steel
Carbon ring seals Carbon-graphite rings
with steel housing (stainless steel is optional)
Gas seals Braided packing
Labyrinth seals Cast iron, with babbitt insert
Joint sealing compound RTV-Silicone rubber
Baffle rings Electroless nickel plated steel
standard. Special material available
Shaft Hot rolled carbon steel
Impellers Cast aluminum alloy
Base & pedestal Steel

Unit Weights & Inertia Data

Stage	Weight		WK ²
	Machine & Base		
4	3,245	(1,472)	59 (2.5)
5	3,880	(1,760)	74 (3.1)
6	4,310	(1,955)	88 (3.7)
7	4,835	(2,193)	102 (4.3)
8	5,315	(2,411)	116 (4.9)

MISCELLANEOUS

Finish See page 25.10.16
Base pads Molded synthetic rubber 0.5 (13) thick;
see page 25.23.09

Notes:

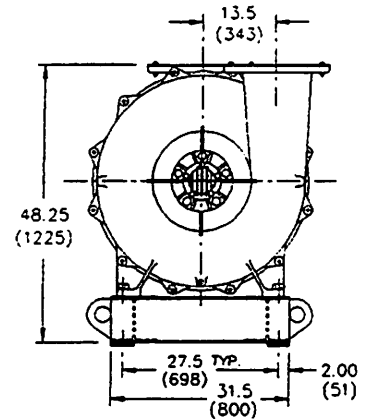
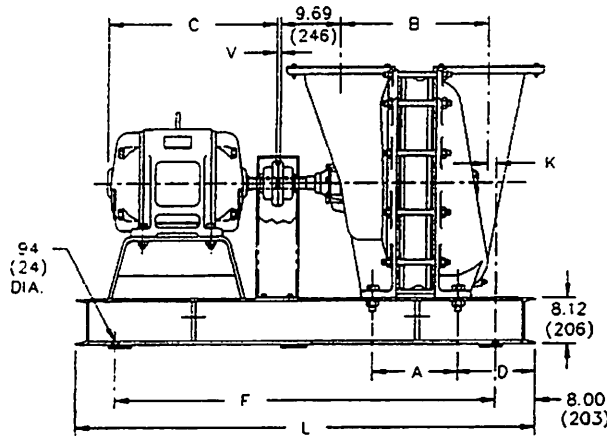
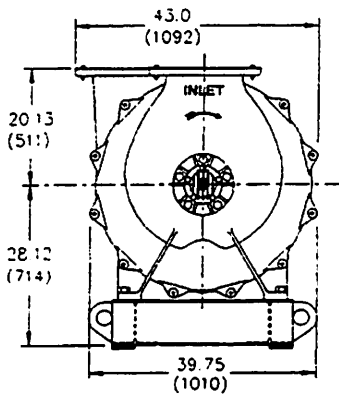
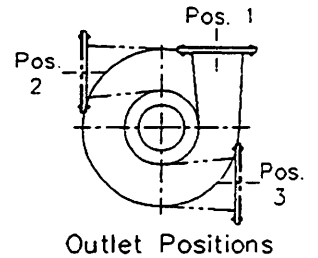
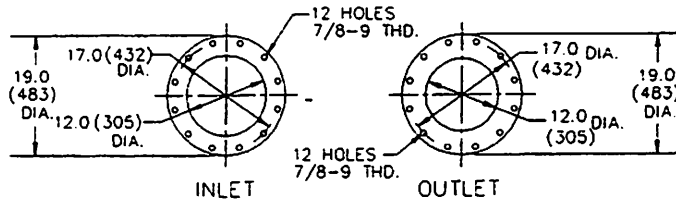
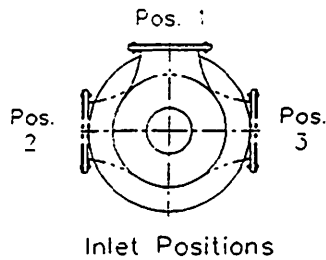
1. Dimensions given in inches and (mm). Weights given in lbs and (kg). WK² given in lb-ft² and (kg-m²)
2. Specifications subject to change without notice.
3. *Under Meehanite License.

LAMSON CENTRIFUGAL BLOWERS, 1 Lamson St., P.O. Box 4857 Syracuse, NY 13221, (315) 433-5500,
FAX (315) 433-5451, 1 (800) 543-7736

For Approval Certified For

**"1260" Series
Air & Gas, Inlet Driven
Direct Drive - Dimensions**

Project _____
Your Order # _____
Our Order # _____ By _____



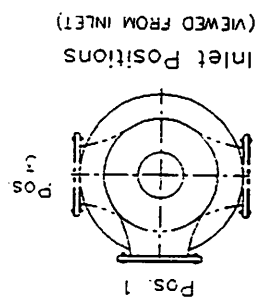
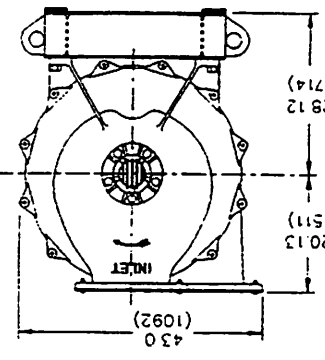
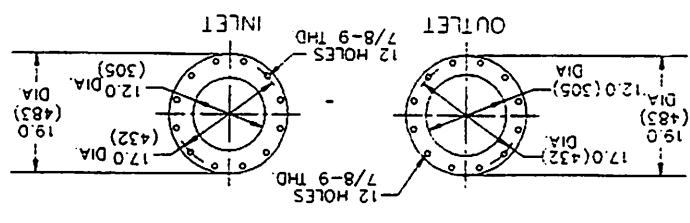
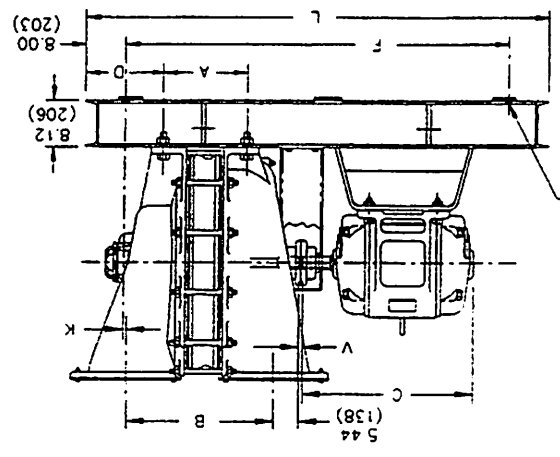
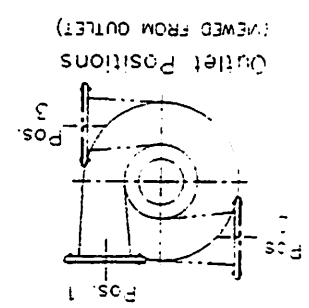
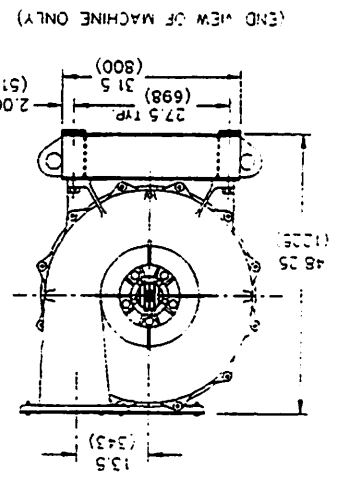
Frame No.	Dimensions						
	A	B	C	D	F	L	K
1264	25.94 (659)	37.38 (949)	445TS	15.00 (381)	85 (2159)	101 (2565)	2.00 (51)
1265	31.75 (806)	43.19 (1097)	447TS	20.81 (529)	101 (2565)	117 (2972)	7.81 (198)
1266	37.56 (954)	49.00 (1245)	447TS	15.00 (381)	101 (2565)	117 (2972)	2.00 (51)
1267	43.38 (1102)	54.81 (1392)	447TS	15.00 (381)	107 (2718)	123 (3124)	2.00 (51)
1268	49.19 (1249)	60.63 (1540)	449TS	15.00 (381)	116 (2946)	132 (3353)	2.00 (51)

NOTES:

- Column "C" lists maximum NEMA motor frame typically required for the machine indicated.
- Dimensions in inches and (mm).
- Flange dimensions conform to 125 pound ANSI cast iron flanged fittings.
- Dimension "V" is distance between shaft ends which varies depending on the coupling used. Refer to coupling data sheet for more information.
- Specifications subject to change without notice.

NOTES:
 1. Column "C" lists maximum NEMA motor frame typically required for the machine indicated.
 2. Dimensions in inches and (mm).
 3. Flange dimensions conform to 125 pound ANSI cast iron flanged fittings.
 4. Dimension "V" is distance between shaft ends which varies depending on the coupling used. Refer to coupling data sheet for more information.
 5. Specifications subject to change without notice.

Frame No.	A	B	C	D	F	L	K
1264	25.94 (659)	37.38 (949)	44.5TS	15.00 (381)	85 (2159)	101 (2565)	.56 (14)
1265	31.75 (806)	43.19 (1097)	44.7TS	20.81 (529)	101 (2565)	117 (2972)	6.38 (162)
1266	37.56 (954)	49.00 (1245)	44.7TS	15.00 (381)	101 (2565)	117 (2972)	.56 (14)
1267	43.38 (1102)	54.81 (1392)	44.7TS	15.00 (381)	107 (2718)	123 (3124)	.56 (14)
1268	49.19 (1249)	60.63 (1540)	44.9TS	15.00 (381)	116 (2946)	132 (3353)	.56 (14)



"1260" Series Air & Gas, Outlet Driven Direct Drive - Dimensions

For Approval Certified for
 Project _____
 Your Order # _____
 Our Order # _____
 By _____

CENTRIFUGAL AIR SYSTEMS
 BLOWERS & EXHAUSTERS

LAMSON PRODUCT DATA



LAMSON CENTRIFUGAL BLOWERS, 1 Lamson St., P. O. Box 4857 Syracuse, NY 13221 (315) 433-5500
 FAX (315) 433-5451, 1 (800) 543-7736

Gardner Denver Machinery Inc.
 1800 Gardner Expressway Quincy, IL 62301

